

Mobile Reports

MITCHELL PEARSON
MPEARSON@PRAGMATICWORKS.COM
@MITCHELLSQL

MITCHELL PEARSON

- Business Intelligence Consultant
- Business Intelligence Trainer
- 4 Years at Pragmatic Works
- Blog at MitchellPearson.com
- mpearson@pragmaticworks.com

Agenda

Web Portal

Mobile Report Publisher

Report Builder

Dashboards & Mobile Reports

Advanced Features

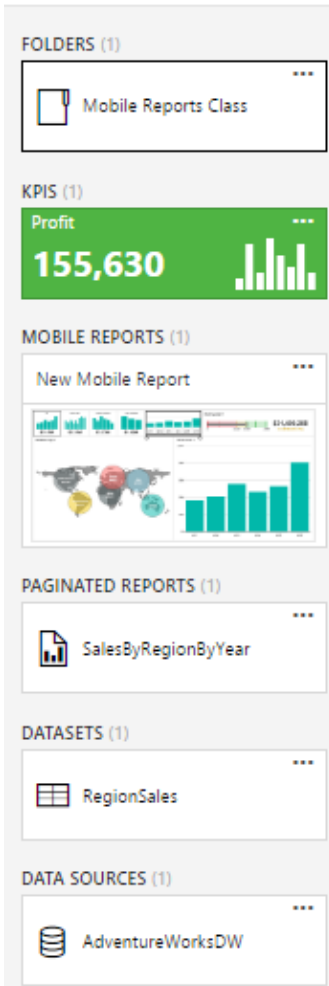


What's New in 2016

Acquisition of Datazen
New Web Portal
Updated Report Builder
Mobile Report Publisher
Power Bi On-Prem



New Web Portal



Report Improvements

HTML5 Support

Print without ActiveX Control

Modern Paginated Reports

Report embedding.

PowerPoint Rendering and Export

Custom Branding

KPIs

Folders

Dashboard Characteristics

Graphical Data

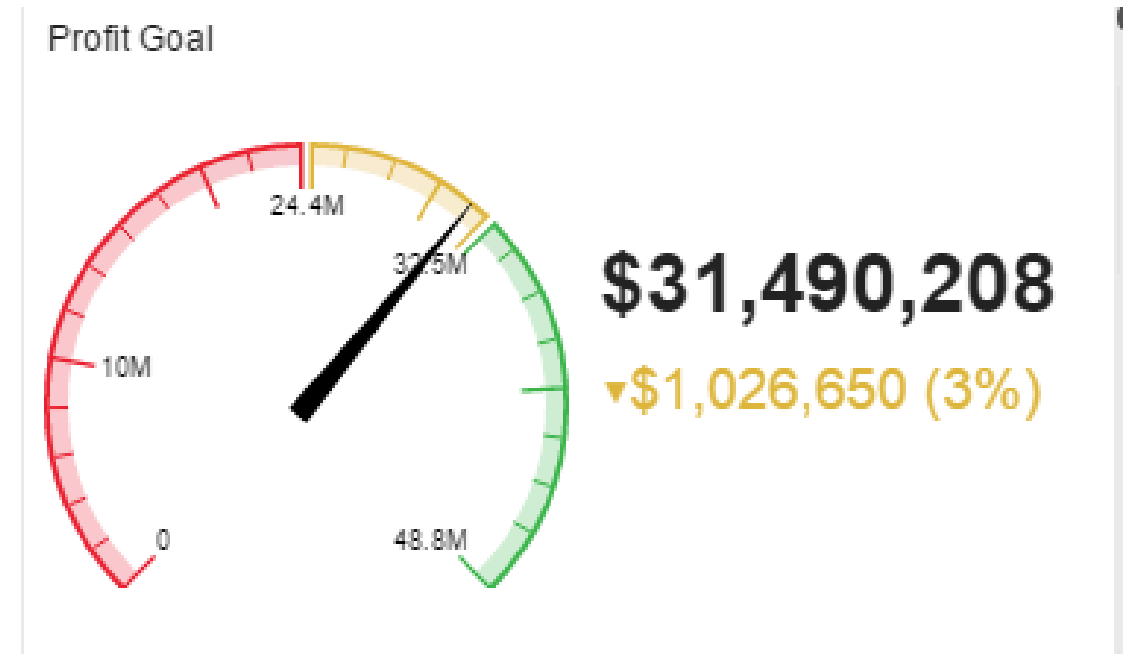
- Key Trends
- Comparisons
- Exceptions

Goal Oriented

Displays data relevant to a goal

Analysis Free

Predefined Analysis and Conclusions



Report Characteristics

Graphical and Table Data

Viewing and Analysis

Non Goal Oriented

No predefined conclusion

Simply represents the data

Analysis Rich

Drill through

Drill down

Interactive Drilling

	2010		2011		
Region	Sales Amount	Product Cost	Sales Amount	Product Cost	Sales Amount
Australia	\$20,909.78	\$12,236.29	\$2,563,732.25	\$1,525,215.02	\$2,128,407.46
Canada	\$3,578.27	\$2,171.29	\$571,571.80	\$343,867.61	\$307,604.52
Central					\$2,071.42
France	\$3,399.99	\$1,912.15	\$410,845.33	\$246,116.25	\$648,065.54
Germany			\$520,500.16	\$310,985.77	\$608,657.98
Northeast					\$2,049.10
Northwest	\$3,399.99	\$1,912.15	\$927,056.76	\$556,929.02	\$619,068.48
Southeast					\$3,637.40
Southwest	\$11,433.91	\$6,927.03	\$1,531,228.41	\$919,760.75	\$810,222.33
United Kingdom	\$699.10	\$413.15	\$550,591.22	\$328,587.76	\$712,700.96
Total	\$43,421.04	\$25,572.06	\$7,075,525.93	\$4,231,462.19	\$5,842,485.20

Dashboard Design

Design First Approach

Simulated Data

Data Collection Second

Goal Oriented



Mobile Report Publisher

Mobile Report Publisher

New report editing tool

Reports

Desktop

Tablet

Mobile

SQL Server 2016

Publish reports to Web Portal



Dashboard Visualizations

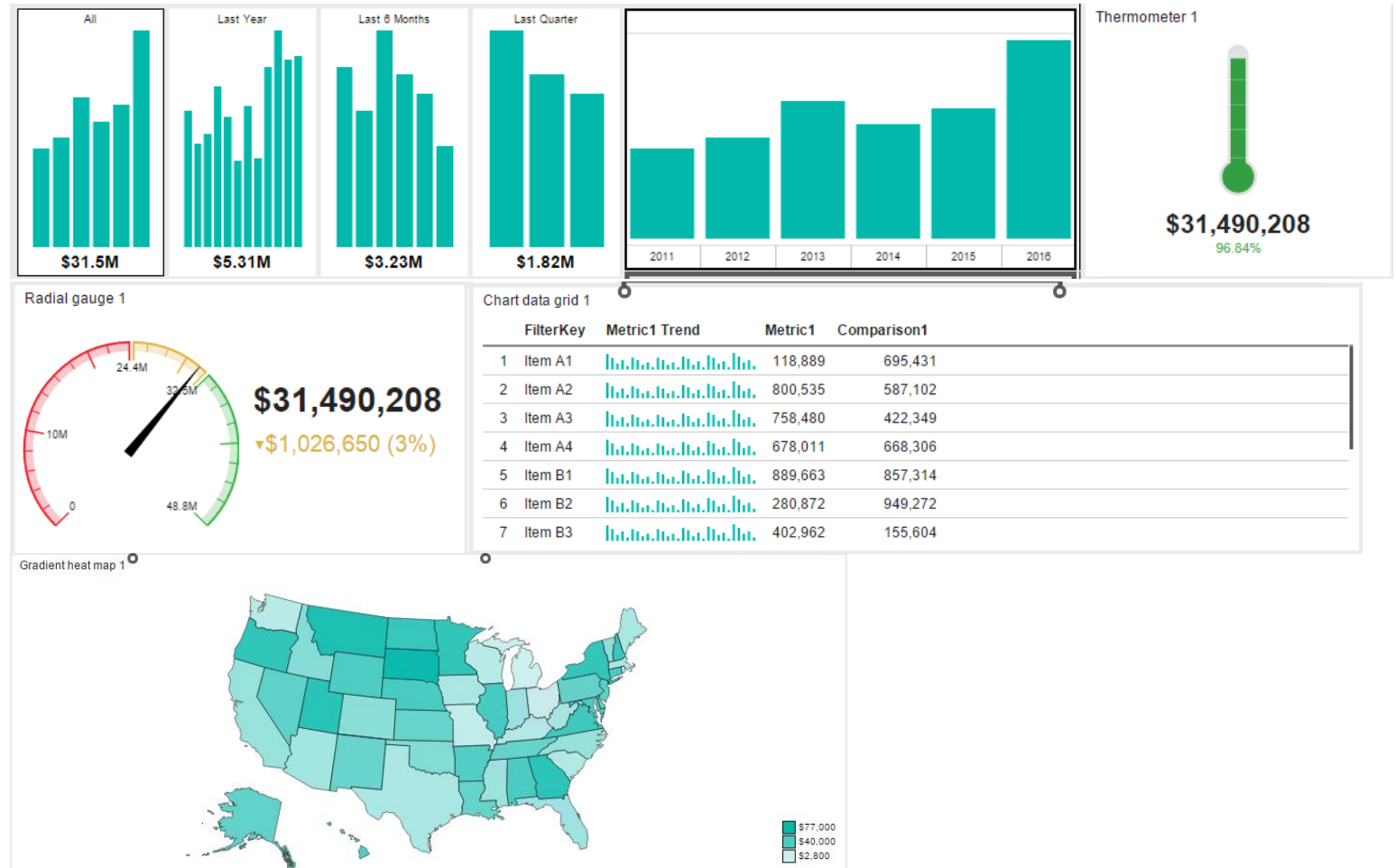
Navigators

Gauges

Charts

Maps

Data Grids



Dashboard Design



Whiteboard
Collaboration
5 Second Rule
Less is More
Review!

Creating Data Sources

Connection String

No GUI provided

Manage

Properties

Subscriptions

Dependent Items

Security

Add to Favorites

The screenshot shows a 'Properties' dialog box for a data source. It has two main sections: 'Properties' and 'Connection'. In the 'Properties' section, the 'Name' field contains 'AdventureWorksDW2016' and the 'Description' field contains 'Connection to Adventure Works data warehouse.' Below these are two checkboxes: 'Hide in tile view' (unchecked) and 'Enable this data source' (checked). The 'Connection' section has a 'Type' dropdown menu set to 'Microsoft SQL Server'. Below that is a 'Connection string' field with the text 'data source="pearson-sql2016";initial catalog="AdventureWorksDW2016"'. A 'Learn more' link is visible next to the 'Connection string' label.

Properties

Name
AdventureWorksDW2016

Description
Connection to Adventure Works data warehouse.

☐ Hide in tile view ☒ Enable this data source

Connection

Type
Microsoft SQL Server

Connection string [Learn more](#)
data source="pearson-sql2016";initial catalog="AdventureWorksDW2016"

Available Data Sources

Microsoft SQL Server

Microsoft Azure SQL Database

Microsoft SQL Server Analysis Services

Microsoft SharePoint List

Oracle Essbase

SAP BW

OLE DB

ODBC

XML



Adding a Dataset

Report Builder

GUI

TEXT

Import

Use Existing Sources

Data Sources must be created in advance.

Time Navigators



Valid Date Table

Time Levels

Years/Quarters/Months/Weeks/Days/Hours

Time range presets

All/Last Year/This Year/Last 6 Months

Default time range

Default time range selection for dashboard

Filtering

Cascading Filters Accessories, All

Category

Accessories

Subcategory

All

Tires and Tubes

Hydration Packs

Bottles and Cages

Cleaners

Fenders

Helmets

Bike Stands

Bike Racks

Radial gauge 1



\$700,760

▲\$140,152 (25%)

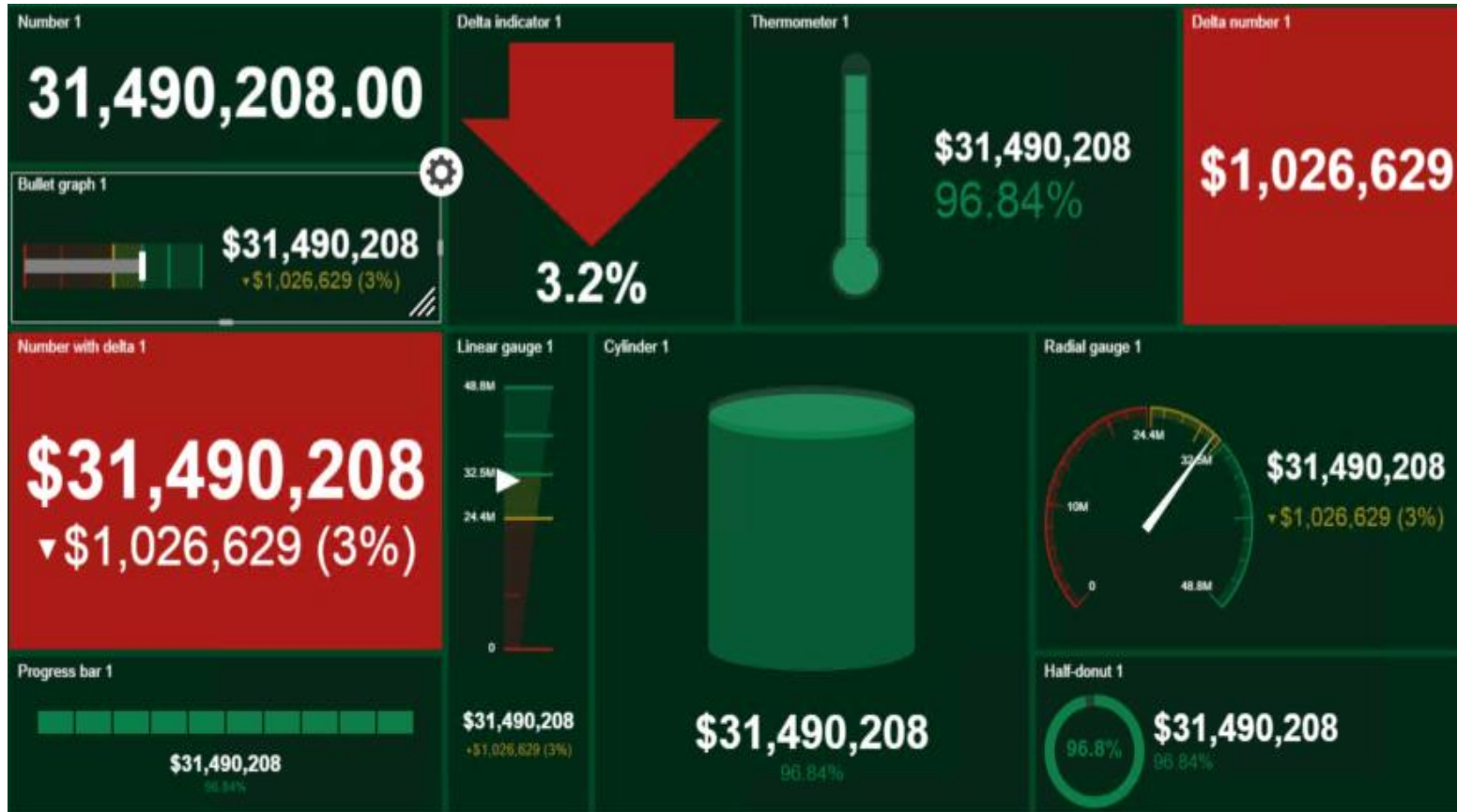
Basic Filtering

Data set filtering
Visual filtering

Cascading Filters

Filtering Filters

Working with Gauges



Different Gauges

- Number
- Delta number
- Delta indicator
- Number with delta
- Radial gauge
- Linear gauge
- Bullet graph
- Progress bar
- Cylinder
- Half-donut
- Thermometer

Gauges

Drillthrough Capabilities

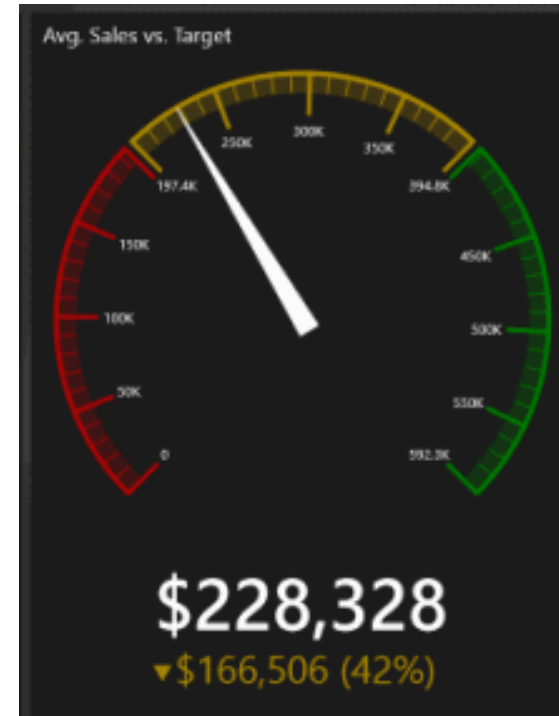
- Dashboards
- Custom URL

Predefined Conclusion

- KPI similarities

Data Properties

- Main Value
- Comparison Value

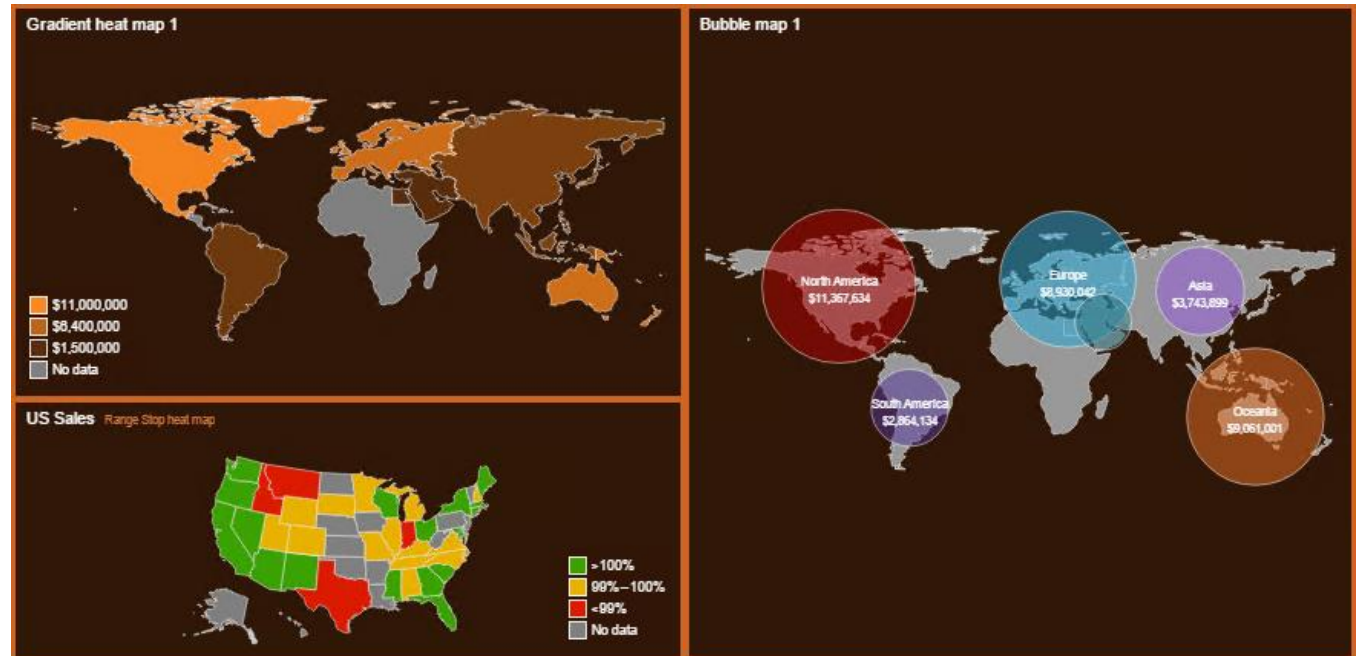


Geographical Maps

Gradient heat map

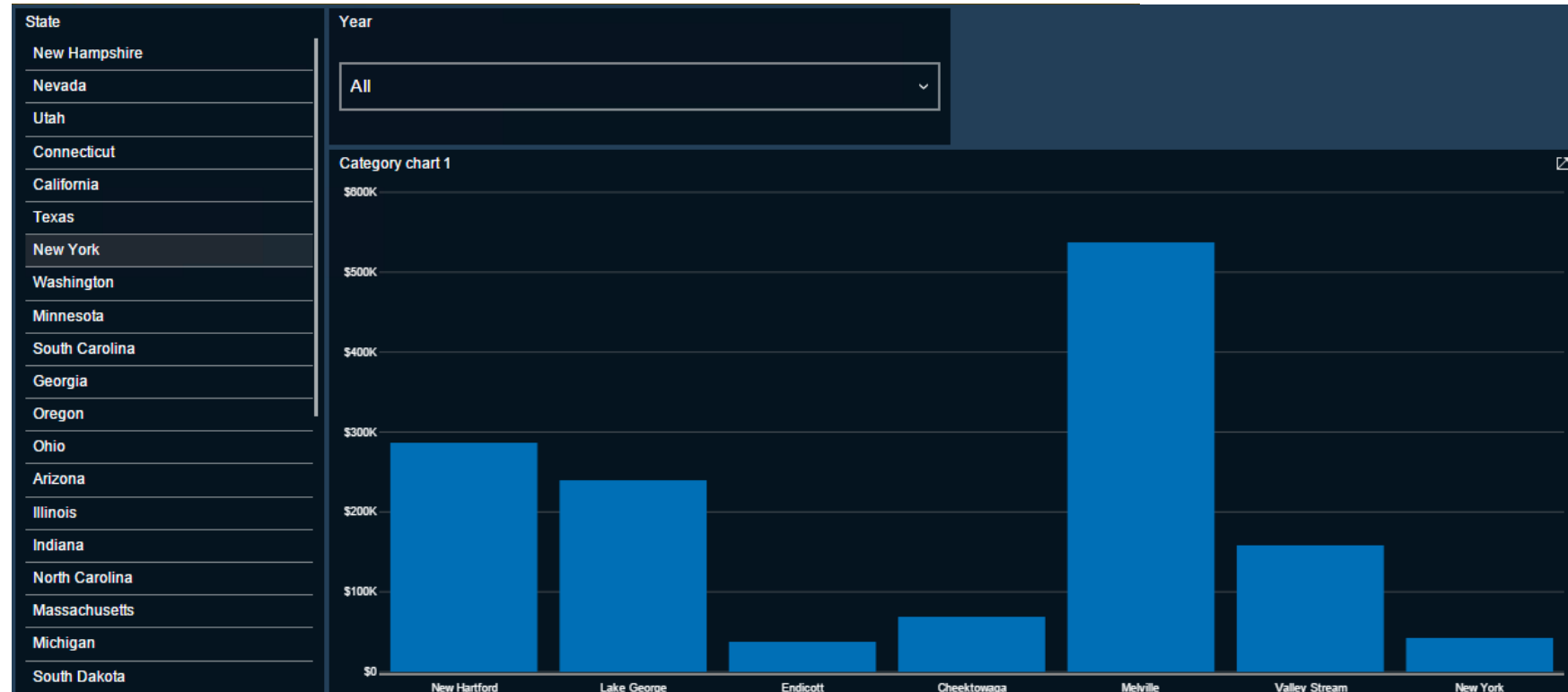
Range stop heat map

Bubble map



Map Characteristics

Static maps
Drillthrough
Custom Maps



Built in maps

Greece

Ireland

Italy

Mexico

Netherlands

Poland

Portugal

Switzerland

United kingdom

USA

North America

South America

World continents

World regions

Australia

Austria

Brazil

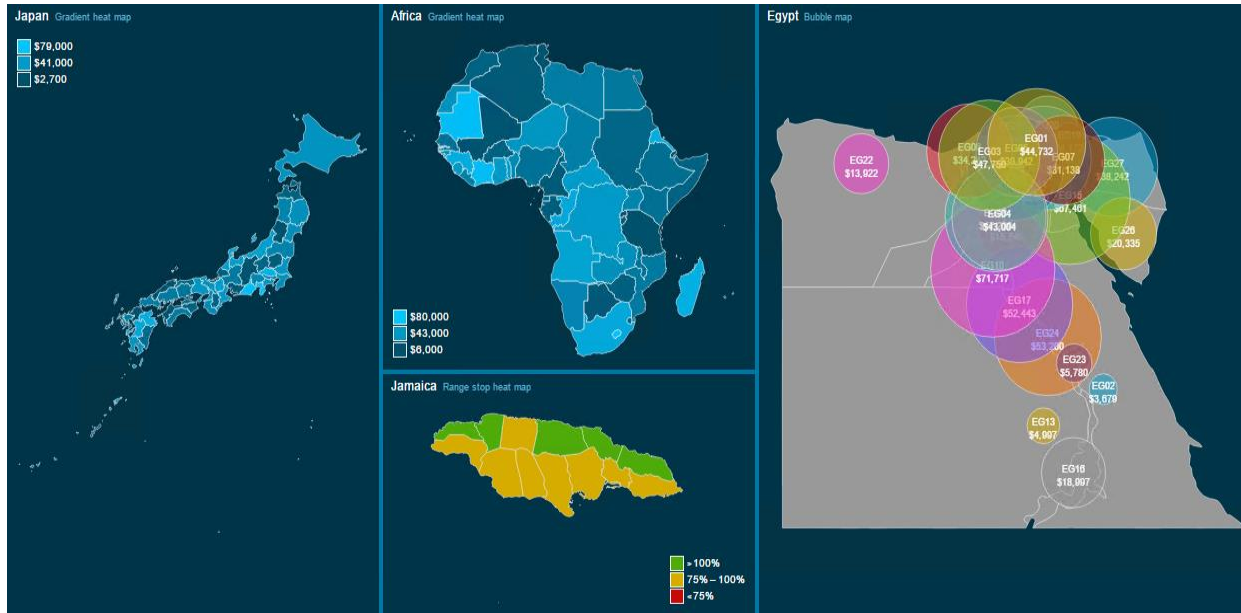
Canada

Cuba

France

Germany

Custom Maps



Two files

- A .SHP file for shape geometries
- A .DBF file for metadata

Christopher Finlan

Reporting Services Program Manager
<https://christopherfinlan.com/>

The screenshot shows the Reporting Services Program Manager interface. A list of countries is displayed in a scrollable area, including Italy, Mexico, Netherlands, Poland, Portugal, Switzerland, United Kingdom, and USA. Below the list is a button labeled "Custom map...". At the bottom of the interface, there is a dropdown menu labeled "World regions".

Advanced Features

Configuring Drillthrough

Drillthrough Visuals

- Gauge
- Chart
- Datagrid

Drillthrough options

- Target dashboard
- Custom URL

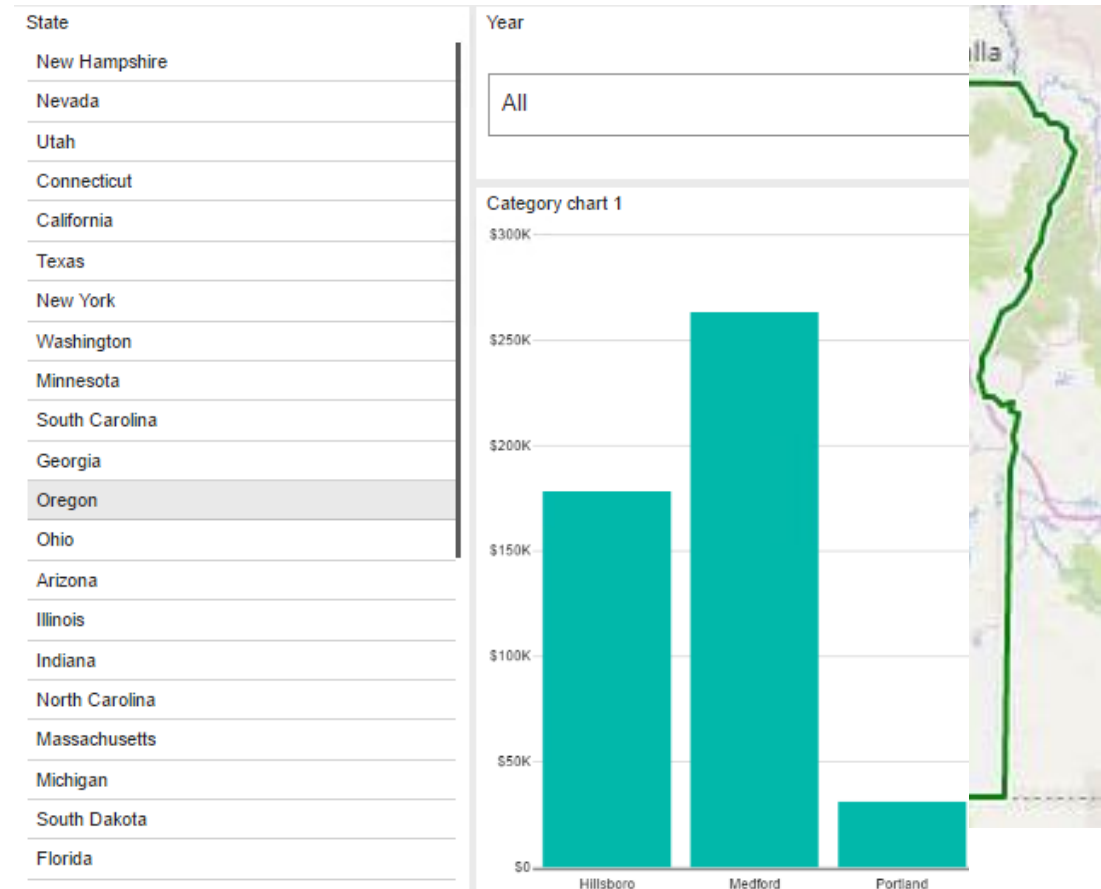
Input Parameters

- Navigator Controls
- Data table Parameters

Custom URL options

Paginated Reports

Bing maps



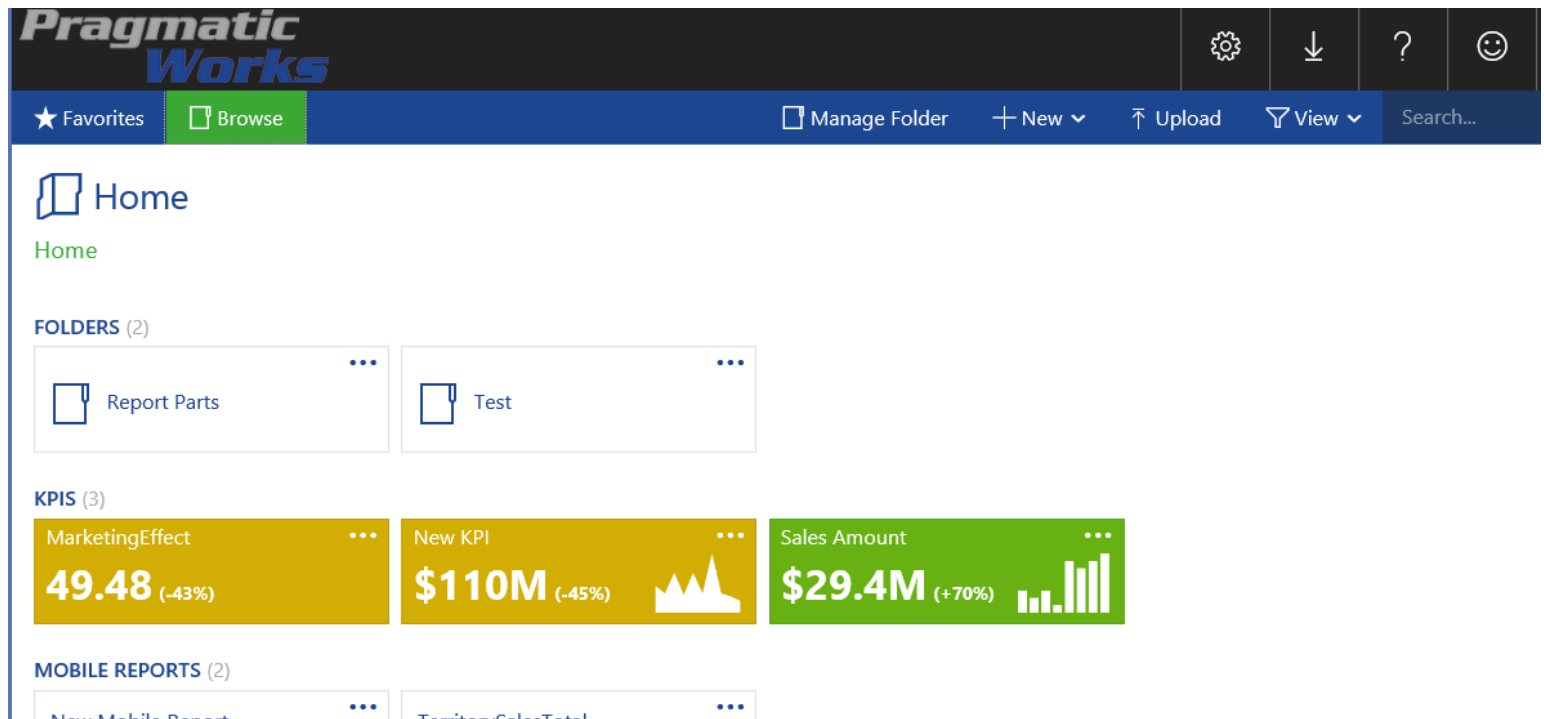
Branding your Web Portal

Branding Your Web Portal

Customizing the Interface

Change Colors

Add a logo



Branding Pack

Zip File

Colors.json

Logo.png

Metadata.xml

